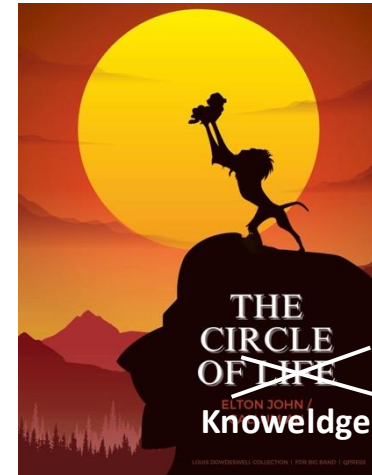
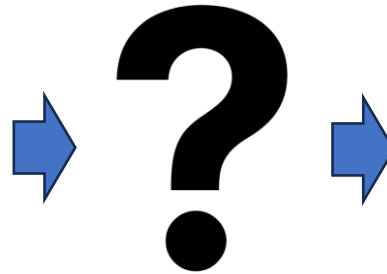


Link Prediction for Event Logs in the Process Industry

Anastasia Zhukova, Thomas Walton, Christian E. Lobmüller, and Bela Gipp

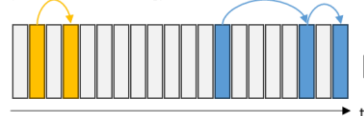


Time stamp	Functional locations	Product	Text logs
2021/08/01 10:04	FL 1-1-2 Tank	ABC	Gesendet an HAH Transfer von B6 nach B1 98779 H2 Wasser nach B6 98781 H2 Organik bleibt bei SFP Wasser D.O. 2-1 .59 2-3 11.06 Kohlenstofftransfer zu K2 B4 32' B9 18' K2 20' Loto't BAC-Zulaufwasser



Original level of the record connectivity

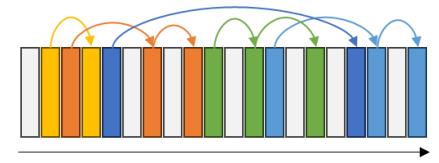
(without Record Linking)



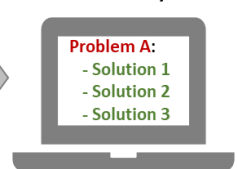
Recommender system



After link prediction with Record Linking (RL)



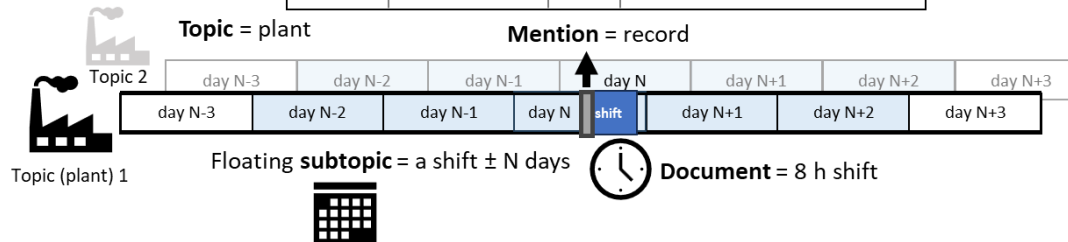
Recommender system



Link Prediction for Event Logs in the Process Industry

Anastasia Zhukova, Thomas Walton, Christian E. Lobmüller, and Bela Gipp

Time stamp	Functional locations	Product	Text logs
2021/08/01 10:04	FL 1-1-2 Tank	ABC	Gesendet an HAH Transfer von B6 nach B1 98779 H2 Wasser nach B6 98781 H2 Organik bleibt bei SFP Wasser D.O. 2-1 .59 2-3 11.06 Kohlenstofftransfer zu K2 B4 32' B9 18' K2 20' Loto't BAC-Zulaufwasser



Domain adaptation of cross-document coreference resolution (CDCR)